

## Eco-Profile

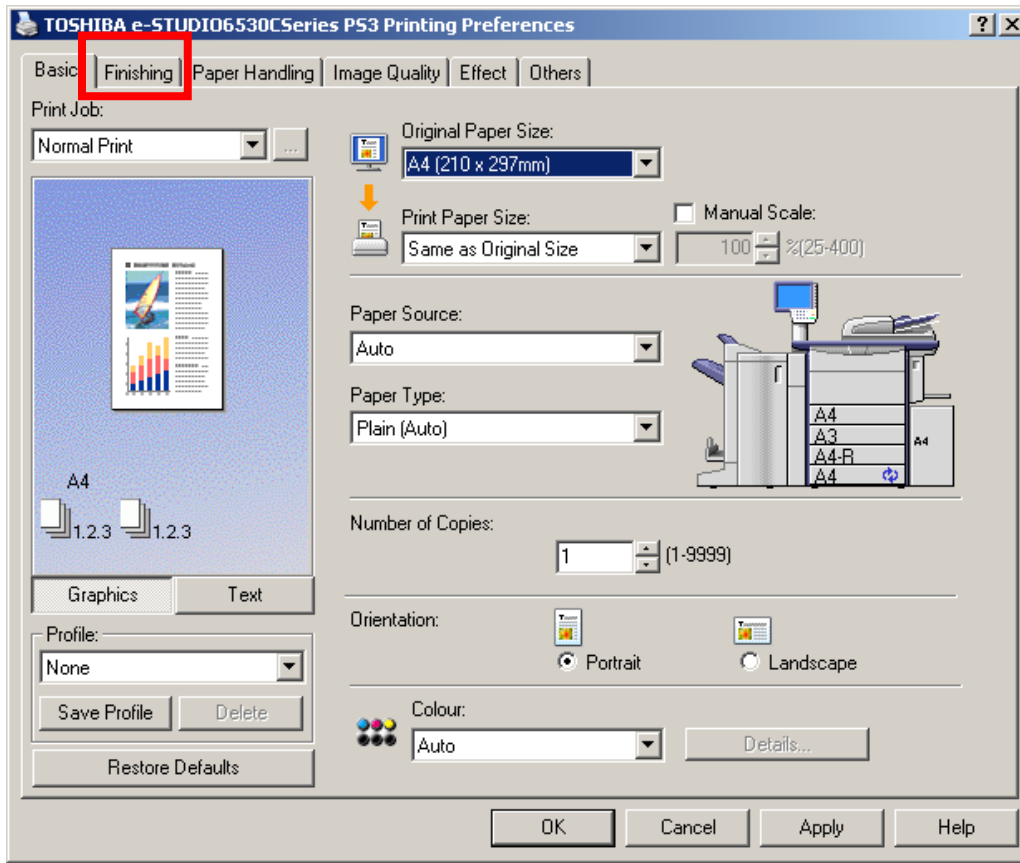
Toshiba TEC is no stranger to efforts designed to increase the overall efficiency of printing environments – from cutting costs to meeting shrinking IT and hardware budgets, to consuming less resources as energy costs continue to grow, and ultimately to catalyse the reduction of the environmental impact in tandem with that of the economical footprint.

Below you'll find a guide on how to set-up all related functions to make use of the efficient and environmental friendly settings by just one click.



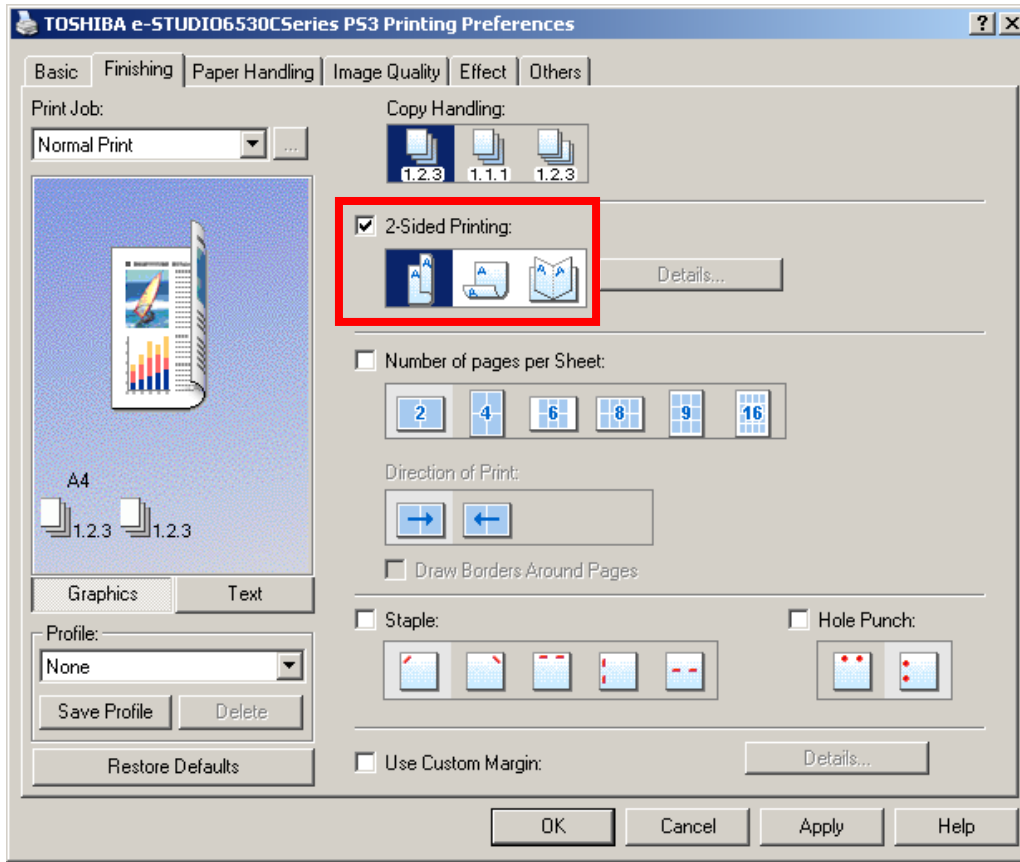
# ECO Profile

After opening your TOSHIBA printer driver, select the Finishing tab.



# ECO Profile

On the “Finishing” tab, select the 2-Sided Printing



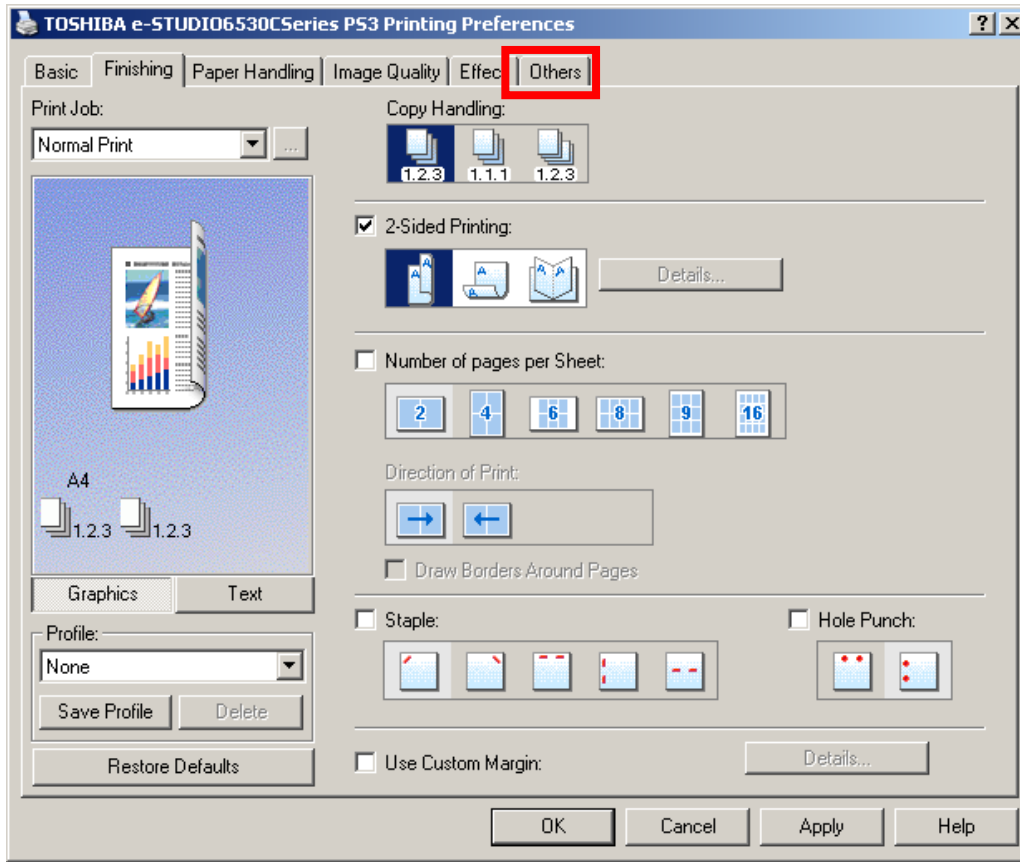
## 2-Sided Printing:

2-Sided Printing, also called Duplex Printing, allows paper saving of up to 50%, hence reducing paper costs and paper related impact to the environment.



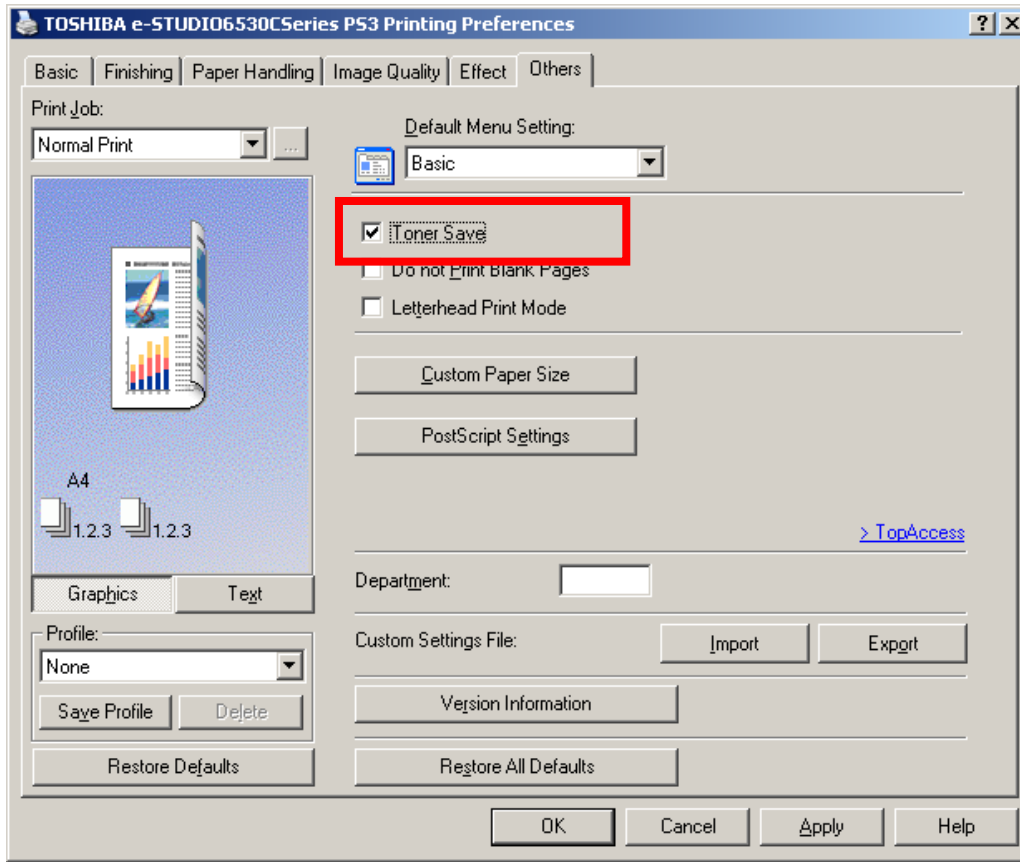
# ECO Profile

After selecting 2-Sided Printing, change to the “Others” tab



# ECO Profile

On the “Others” tab, select the Toner Save mode



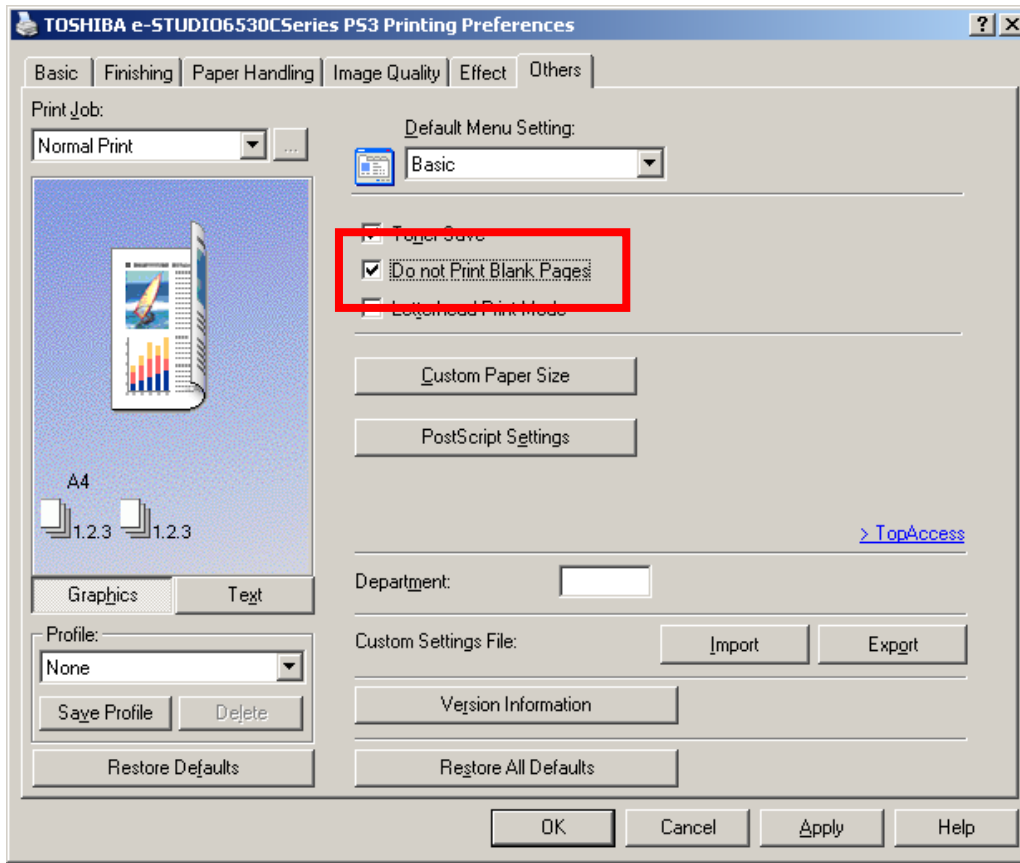
## Toner Save:

Toner save mode reduces the amount of toner used, resulting in a longer life of your toner cartridge.



# ECO Profile

Also on the “Others” tab, select the “Do not Print Blank Pages\*” option



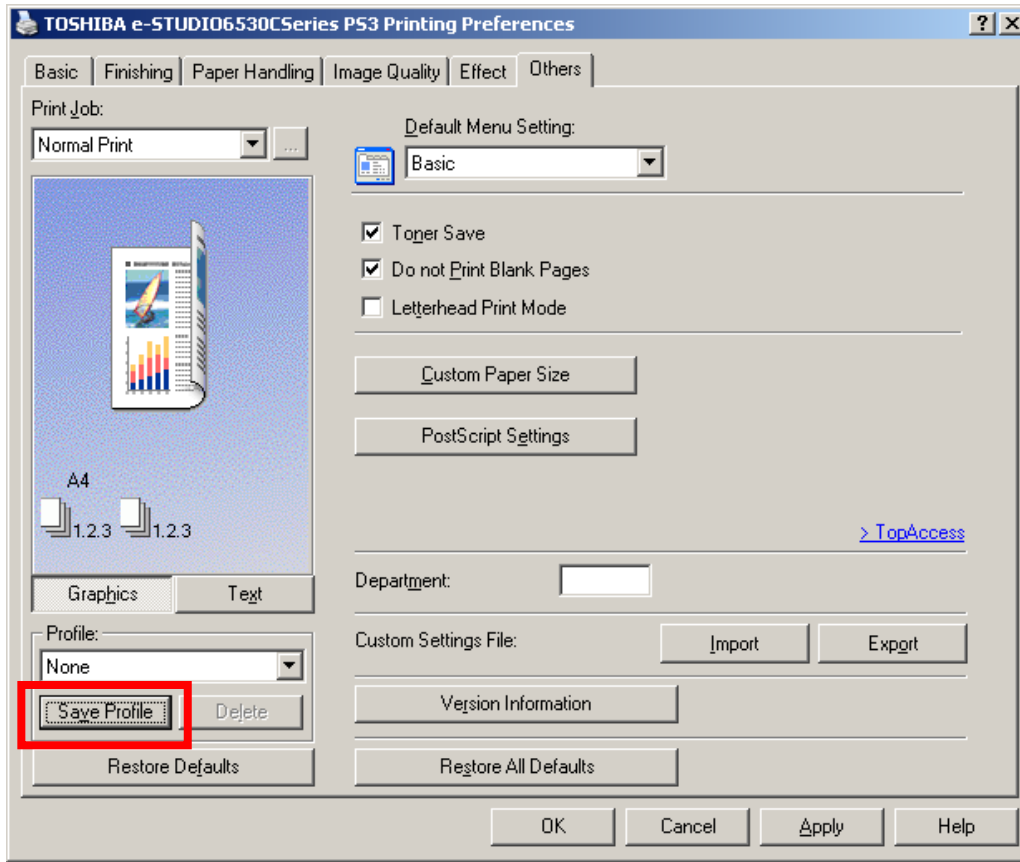
**Do not Print Blank Pages:**  
Not printing blank pages can further reduce the paper consumption.

\*This function is not available for all models



# ECO Profile

After all settings are done, the current configuration of the printer driver can be saved as profile



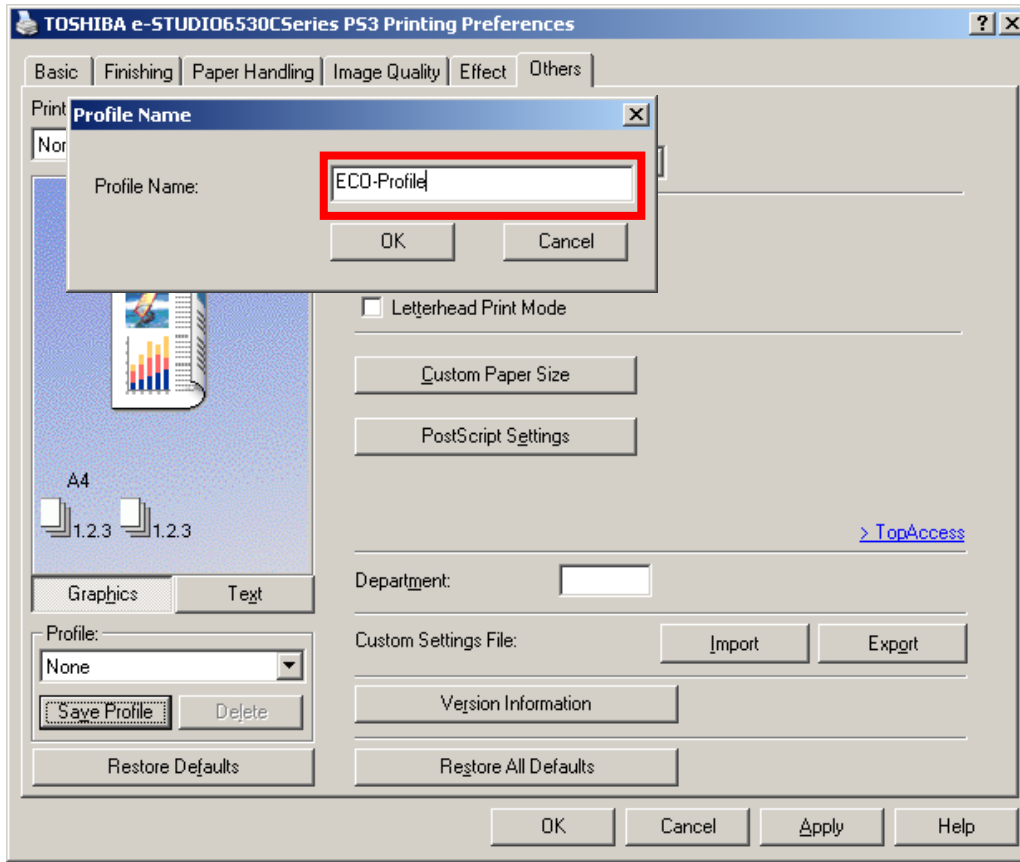
## Save Profile:

Save Profile will store all settings to an easy to recall profile. Hence, for future use of the settings only one click is necessary.



# ECO Profile

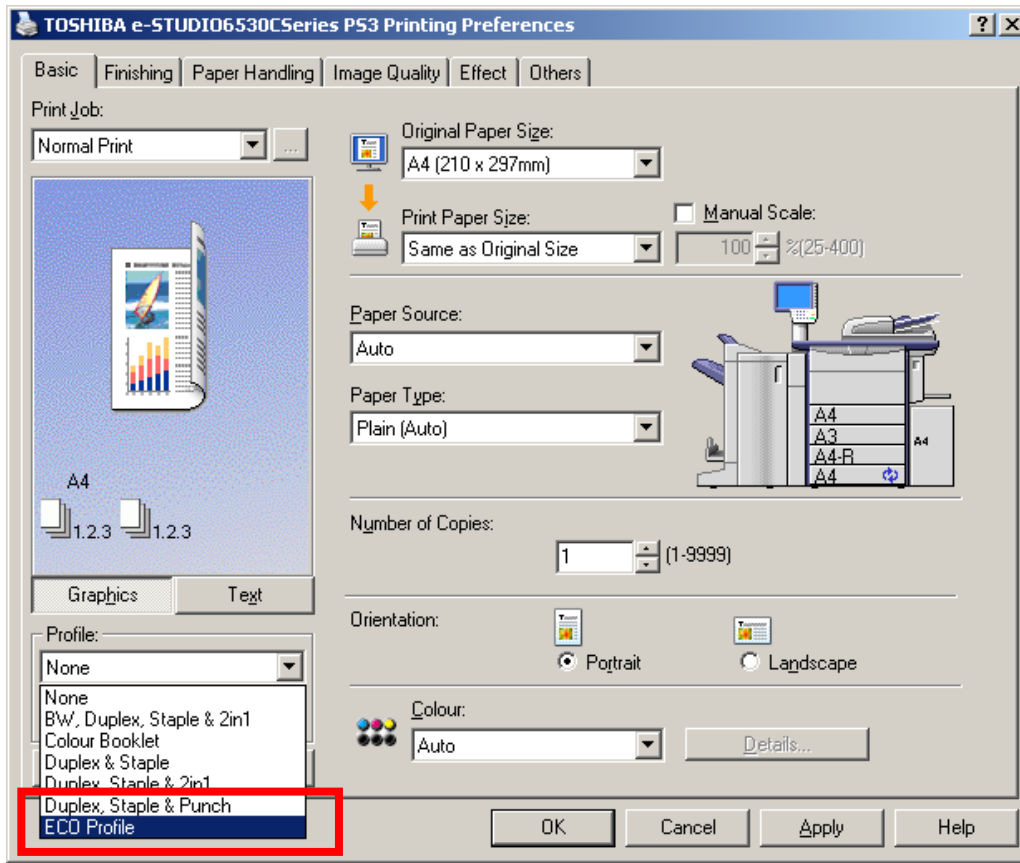
In the new window, name the new settings as “ECO-Profile”





# ECO Profile

From now on, you can recall the environmental friendly settings with just a single click from any printing application



**TOSHIBA**

**Leading Innovation >>>**