

MAGICAL - ECOLOGICAL - ECONOMICAL

It's not magic. It's innovative Toshiba hybrid technology — combining conventional printing with erasable printing — allowing you to reuse paper over and over again. One single device, which easily connects, integrates, and simplifies your workflows — and also helps to save valuable resources. **The world's first monochrome MFP with erasable print function.**

Ecology

The idea of a paperless office has been around for more than 40 years, yet even modern business workflows still require a fair amount of documents to be printed. Toshiba now has a great solution for companies which want to be ecological and still be economical and efficient. Our unique hybrid printing technology offers everything you would expect from a state-of-the-art multifunctional printer (MFP) and more: You can now even reuse the paper.

Economy

One single system can print in regular black as well as in erasable blue. For you this means you can use the Eco Hybrid MFP just like any other monochrome device to print in black and can choose from a variety of finishing options to ensure you have a system which covers all your needs. Our erasable blue toner allows you to reuse the paper you have printed on, so that you can use less paper, without having to print less. Reducing paper usage will save natural resources, reducing your company's footprint and also help you save money.

PRINTING HAS NEVER BEEN THIS GREEN

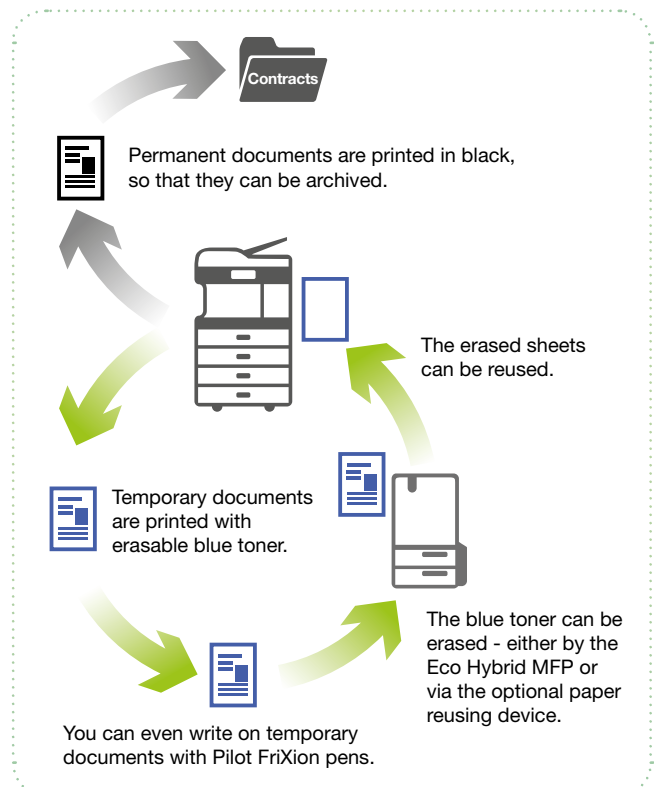
How does it work?

Very often we print documents, which are only needed temporarily, e.g. to proof-read a document or as a reminder to do something. For these cases, Toshiba's Eco Hybrid system gives you the possibility to select the erasable blue toner, so that when you don't need your document anymore, you don't have to throw the paper away, but can delete whatever was printed on it and reuse the sheet. To make it easier, rule-based printing can be activated in the printer driver.

This allows you to define multiple rules for the printer driver to then automatically select the blue toner e.g. for all e-mails and faxes as these type of documents usually tend to be used only temporarily.

What is the benefit?

Assuming that you use a sheet of paper five times (i.e. reuse it four times) and you print 4,000 erasable pages per month, you can save up to 80% of paper. This means that after five years, you will have saved almost 200,000 sheets of paper. In other words: The same amount of paper which you would usually use in one year, will now last five years.



KEY FEATURES

- › A unique monochrome system with a speed of up to 50 pages per minute (ppm) and up to 35 ppm in erasable blue ensures the Eco Hybrid MFP can handle even large jobs effortlessly.
- › Alternatively, you can use the optional e-STUDIO RD301 — an erasing unit with advanced features. Not only does it erase at a speed of up to 30 ppm, it also sorts the paper into reusable and non-reusable paper.